

Is God a Mathematician?

Exploring Math in Medicine

Sharry Edwards, MEd

Music Association: D#

Astrological association: Cancer

Color association: Gold

To provide predictability and safety, the concepts of math and medicine often act conjointly to quantify, define, and model medical practice.

Studies conducted by the non-profit Institute of BioAcoustic Biology & Sound Health, located in Albany, Ohio, USA, have consistently demonstrated that math can be much more than a measurement tool.

The case studies they have amassed, using Math as frequency-based BioMarkers, indicate that the solution to therapeutic predictability and resolution may be possible.

The Institute posted its first frequency-based article about potential COVID-19 damages in December 2019. Since then, they have evaluated 1000s of frequency-based vocal prints. It took nearly three years for the conventional options to catch up with even a few of their conclusions.

Continuing updates and information can be found at

<https://soundhealthoptions.com/corona-corner-2/>

Last month, this column reported the findings of a 99-million-person survey of COVID-vaccinated individuals that predicted future damages. The report provided bad news with no options for the threat of worldwide depopulation through COVID-19-caused deaths.

PubMed:

<https://pubmed.ncbi.nlm.nih.gov/38350768/>

The survey reported projected upcoming damages, without any means of remediation, concerning those violated due to the COVID-19 pandemic. This month, we provide potential tools and solutions to help ease the forecasted health devastation.

BioAcoustically Speaking

SoundHealthOptions.com

Accelerating human healing through Vocal Mapping: our future depends on its acceptance.



1. The 99-million-person survey reported heart, vascular breakdown, and circulation faults as significant. These issues can be vocally screened using the template Subsequent Factors – BioBundles - at www.SoundHealthPortal.com. The public online screening uses a compilation of 14 databases to mathematically identify individual issues. The computerized reports are designed to be reviewed by a person’s wellness provider.

2. Mathematical-based issues associated with thrombin, blood clotting, iron, blood homeostasis, zinc, Protein C, and aminolaevulinic acid were common within the vocal evaluations for those suffering clotting concerns associated with vaccine damage. These factors can be used to mathematically discern potential individuals, who received COVID-19 damages, via SoundHealthPortal.com.

3. Macular Degeneration seems to be among the damages listed for those vaccinated. Vocal survey compilations from the Institute of BioAcoustic Biology & Sound Health indicate that frequency faults, dealing with the Rectus eye muscles and the amino acid carnitine, helped reverse macular degeneration factors.

4. Immune issues are strongly related to COVID-19 damage. Glutathione was involved. Mike Adams, the Health Ranger, strongly recommends that it not be taken supplementally, and the body should be left to make its own by combining NAC (acetylcysteine) and bromelain to support a strong immune response. For additional information <https://www.ncbi.nlm.nih.gov/pmc/articles/PMC7999995/>

5. Dr. Ana Mihalcea reported that lipid metabolism has a great deal to do with blood pollution from unreported nano components found in COVID-19 vaccines. This claim indicates that efficient lipid metabolism is essential to competent immune function. Based on these

findings, a template has been created, allowing individuals to mathematically evaluate themselves against lipid faults. Go to SoundHealthPortal.com – Choose the Lipid Liabilities template for more information.

6. Many COVID-19-damaged people report fatigue and muscle pain. BioAcoustically Speaking, fibromyalgia pain responds to increased cellular oxygen, pyruvate activation, and lactic acid elimination. Fatigue and fibromyalgia can be monitored mathematically through the Sound Health Portal which is open to the public at no cost. NAD (nicotinamide adenine dinucleotide) is often lacking in COVID-19-damaged individuals. It supports mitochondrial energy, enzyme activity, cell signaling, circulation, and cellular functioning.

7. Iron and blood formation play a vital role in fatigue and energy metabolism. Issues of iron, inflammation, and blood metabolism can also be mathematically evaluated via the Sound Health Portal.

8. Disturbances in the God Gene play a role in COVID-19 damage. This gene, proposed by geneticist Dean Hamer, is a biochemical that hardwires our brain for faith and empathy determinants. This “gene” is associated with dopamine, serotonin, and bonding biochemicals. It is included in many COVID assessment templates offered at SoundHealthPortal.com. This may explain why many COVID-19-vaccinated individuals complain of feeling a loss of connection to God, their community, and friends.

9. Quercetin frequencies were one of the original COVID competitors Sound Health reported in 2019. Quercetin is a bioflavonoid associated with immune and inflammation responses. In addition, quercetin from food sources, such as onion, was shown to improve platelet aggregation.

10. Respiratory failure has been reported as a symptom of Covid damage. James Marshall, actor and composer, created a series of frequencies designed to support the lungs and respiration. Download it free from <https://www.bioacousticsolutions.net/le-ciel> or use the COPD template on the Sound Health Portal to check for breathing issues.

11. Many COVID-19-vaccinated individuals report ringing in the ears (tinnitus). BioAcoustic records show that potassium, actin, and myosin-related frequencies are present in their vocal prints. It usually takes months to eliminate tinnitus symptoms. The Sound Health Portal offers Math-based Tinnitus evaluations.

It can be demonstrated that just as there are Pathways of compounds called Chemistry; there are Mathways of subtractive frequencies, dubbed Sonistry that can be used to create numeric

biomarker matrices capable, individually, and collectively, of being therapeutically predictive, diagnostic, and prescriptive. More importantly than Sound Health bringing you information about math as medicine, we want to provide tools and solutions to support optimal health and wellness. Our goal is to help the development of BioAcoustic Centers in every community. To support that goal, we provide the opportunity to learn Vocal Profiling skills for themselves, their loved ones, and their communities. Class info:

<https://www.bioacousticsolutions.net/portalclass-info>

Esoteric Thought: Was the COVID-19 Pandemic situation created to allow us to choose, as a population, what we want to worship: Greed or the good of humanity? Is Covid our modern-day Sodom and Gomorrah?

**BioAcoustic Keynotes are
brought to you
by the
Institute of BioAcoustic
Biology
& Sound Health**



Go to – SoundHealthPortal.com
to have your vocal print analyzed.

Download the software, practice with it, and use the tutorials.

For a live online class, please contact Sharry at
SharryOnAir@gmail.com

To comment or ask a question - SharryEdwards@gmail.com

SOUND HEALTH KEY NOTES FOR JULY

Note the many connections to COVID-19 damage.

We on this planet are influenced by frequencies coming at us from our solar system. The listing below is our attempt to forewarn the public of what influences will be active for the next month.

WEEK ONE

Blood and circulation issues dominate this week. Nutrients in stress: niacin – de-clumps “sticky” blood and supports circulation and DNA genetics. Iron continues to be an issue. Vitamin C continues to flare as allergy season fires up.

You may react more emotionally as dopamine, the feel-good biochemical, comes into play. Depending on your brain dominance, your relationships may be more or less satisfying.

Nerve damage may be more noticeable. Medication in stress: Warfarin – a blood thinner. Upper back muscles will feel stressed. Pathogen active currently: Streptococcus pyogenes is a ubiquitous bacterium responsible for hundreds of millions of illnesses, from tooth decay to meningitis, throughout the world each year, some of which are fatal. Back strain with adrenal tension, are obvious over the 4th.

WEEK TWO

Insulin resistance is high this week likely because of fatty liver issues. It will be harder to lose weight as

insulin resistance helps to maintain fat storage. Carbohydrate Allergies begin to plague now, particularly nose and bronchial issues. Remember the support of Vitamin C may help. Marijuana may have more of an effect this week. Menstrual cramps may be relieved easily with progesterone oil or cream as this hormone is active this week. Strep still lurks. Platelets are vulnerable, and B3 (niacin) may help break up sticky blood.

Medication this week deals with high blood pressure. I’ve tried Nitric Oxide tablets (from Amazon NO40) - They work for me.

Marijuana is still active along with inflammation markers and fatty liver indicators. Calcium and cancer markers rise this week (calcium, calcitonin, and the Burzynski frequencies plus 5 HETE – all CANCER RELATED.)

Nerve sheathing activates this week – You might want to check out Benfotiamine (said to be great for restless legs due to nerve damage).

Adiponectin rears its ugly head this week – from Wikipedia –

“Adiponectin is a [protein hormone](#) and [adipokine](#) involved in regulating [glucose](#) levels and [fatty acid](#) breakdown.”

Carnitine helps break down fatty acids but is also in stress this week. The literature indicates that

pioneer of BioAcoustic Vocal profiling

carnitine combined with alpha-lipoic acid may help regulate blood glucose.

WEEK THREE

The keynote for this week includes the note of E which deals with wet tissues of the body, particularly the nose, mouth, throat, and lungs. More mucous may be experienced along with a stronger reaction to mucous-producing foods. Deep breathing may be difficult.

Many forms of rhinovirus are still lurking. Muscles: Tibs and diaphragm frequencies may be more vulnerable.

WEEK FOUR

This week is further involved with the amino acid carnitine. People who cannot gain weight are high in it. It can be found primarily in meats. Vitamins B1, B6, C, iron, methionine, and lysine must be available in the body to support synthesizing carnitine.

The end of this week is ruled by the lower back, encompassing the sexual “thrust” muscles for men. These are the muscles that cause stress in a golf swing.

The pathogen active for the next few days is *Helicobacter pylori*, and is responsible for stomach lining irritation.

Muscles under stress currently: mostly neck muscles. It is likely not your pillow, it is just that time of year.

A protein that helps the body use leptin (that dreaded fat storage hormone) is high for the next few days. It might not be a good time to start that diet you have been putting off.

We have often said that BioAcoustically Speaking almost everything is something else. By that, we mean that one frequency can represent many things.

This week’s Keynote is a great example of this. The frequency of Marijuana, a medicinal herb, is the same as a natural hormone, Progesterone, which varies significantly with the human reproduction cycle. This may be why some false positives show up during drug testing. Progesterone is found in both males and females. Low Progesterone has the same symptoms as coming down from a marijuana high; you experience the munchies.

Progesterone is necessary to produce sex hormones, maintain pregnancy, support brain function, and regulate libido.

The tenets of BioAcoustic Biology have stated for nearly two decades that frequency relationships can explain the connections between many diseases. For example, BioAcoustics can now show the root cause of the connection between heart disease and cranky knees – the frequency of the heart muscle and knee muscles are the same – so when knees get weak, it is likely that the heart muscle is also stressed. Conventional science may know these relationships exist but cannot explain why.

Sensitive persons may experience reactions a few days before the actual activation date.

With an understanding of frequency antidotes – not much can be thrown at us that we cannot counter. The concepts of Math as Medicine may

help scientists leap forward toward understanding how disease can be predicted and treated.

Please consider attending our online tutorials and classes to protect yourself and your loved ones – <https://www.bioacousticsolutions.net/portal-class-info>

BIOACOUSTIC SOLUTIONS

Breaking the Sound Barriers of Disease!

Can Your Voice Reveal the State of Your Health?

Evaluating your own voice takes on new meaning if you begin to consider the possibility that the sounds of your voice may be a holographic representation of all that you are. Imagine a future in which our individual vocal frequency is our identification; where the use of frequency based biomarkers contained within our voice can be used to keep us healthy and emotionally balanced.

From birth to death, we use sounds to express our needs and emotions but there are additional layers of information hidden within our words. As man evolved, language became levels of intricate harmony nestled within structures of great elegance that carried meaning and allowed understanding of ourselves and others.

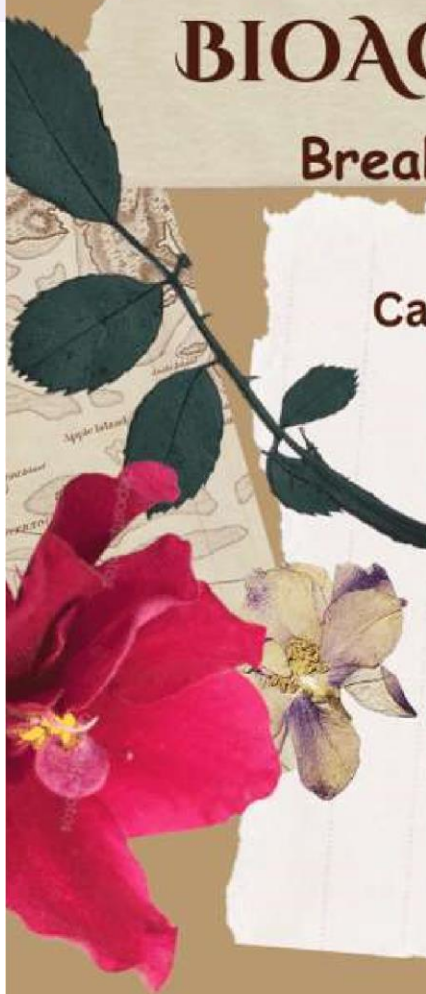
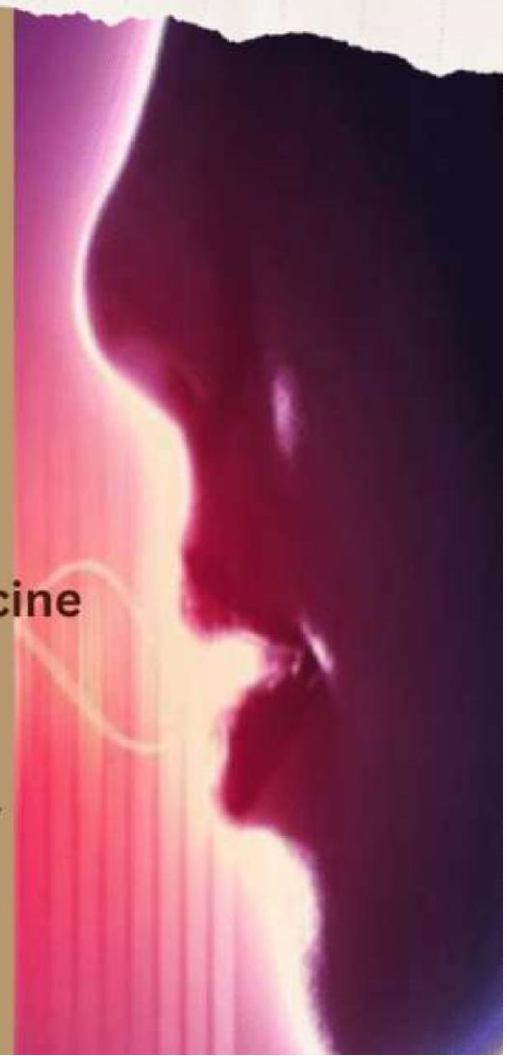
Every Body has a Sound

BioAcoustic Biology has verified that the frequencies of your voice are a numeric holographic representation of those brain waves. Correlations of these frequencies to human health and wellness have been decoded by the Institute of BioAcoustic Biology & Sound Health since in early 80's

[Create a BIOACOUSTIC CENTER for
YOUR COMMUNITY](#)

Exploring the Potential of Math as Medicine

In order to provide predictability and safety, the concepts of math and medicine often act conjointly to quantify, define and model medical practice. Studies conducted by the non-profit Institute of BioAcoustic Biology & Sound Health, located in Albany, Ohio, USA, have consistently demonstrated that math can be much more than a measurement tool. The case studies they have amassed, using Math, as frequency-based BioMarkers, indicate that the solution to therapeutic predictability and resolution may be possible.



Breaking the Sound Barriers of Disease Series

Connecting the dots for mechanical sentients

BioAcoustic Solutions for the Professional

- ✓ Self Paced
- ✓ Software included
- ✓ Math as Medicine info
- ✓ Humans as carbon-based mechanisms
- ✓ Determines root cause BioAcoustically
- ✓ Maintains client history and comparisons
- ✓ Sound Health Portal Subscription Required
- ✓ Access to up-to-date/cross referenced BioMarkers
- ✓ Create-Client based evaluations with cross-references using a few clicks of a button

Based on work by Sharry Edwards, MEd., the recognized pioneer of BioAcoustic Vocal Profiling.

BioAcoustic Solutions for the Professional- Fact Sheet

Designed for Professionals

Mechanical Sentient Connections

Class Structure:

ONLINE

Cost: \$6400

Session 1-3; group, self-paced, 2-hour classes.

Session 4-5; private, 2 hours each

Course Outline:

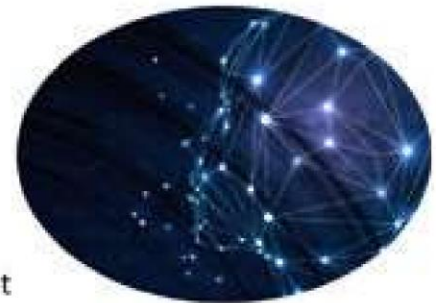
Session 1- Preparing your computer, Portal overview

Session 2- BioMarkers, Client Reports

Session 3- Templates, Bundles

Session 4- Reports, Formulas, ToneBox

Session 5- Client Follow-up



WHAT YOU GET:

S2S ToneBox

Microphone

ToneBox

Access to Health Portal

NanoVoice Software & Text

Access Support Group

Starter Wheel

Manuals

Video List/Access

BioAcoustic Basics Text

Wellness Provider Text

Pulling Points PP

Tone Trials PP Video

leCiel

Robot

Biggest Liar

Sample reports, Keynotes

Send us

NutrientAsm Chart

Guardian Papers

Jill's Bib

Breaking Sound