

# SELF-HEALTH MADE EASY with Public BioAcoustic Classes Sharry Edwards, MEd

Keynote August 2024

Astrology correlation: Leo

Color correlation: Yellow

Musical correlation: the note of E

It has been written that many great thinkers have attempted to decode the mysteries of the universe using math, geometry, music, frequency, and architecture. The popularity of the movie: The DaVinci Code and Dan Brown's book, The Symbol have sparked our imaginations concerning information that has been kept hidden from the populace. While Brown's book hints at architecture as hidden knowledge, recent work by the Institute of BioAcoustic Biology, under the tutelage of Sharry Edwards, proves that the ancient Templar architectures contain the math codes that support cellular rejuvenation.

The idea of revisiting lost knowledge through the use of a mathematical matrix of the frequency field of the body is very important to our future of understanding physics. Edwards' research provides many of the answers concerning

Pythagorean string theory and how it can be combined with modern string theory to explain

**"Vocal Profiling is an innovative biotechnology inspired by the pioneer of Human BioAcoustics, Sharry Edwards™, MEd."**

**...Duke Encyclopedia of new Medicine**

how DNA "strings" can be dominated using math as frequency.

**BioAcoustically Speaking**

SoundHealthOptions.com

***Accelerating human healing through Vocal Mapping: our future depends on its acceptance.***



**SOUND HEALTH**

5151 Alton Street

Albany, Ohio 45710

Phone: 740-698-9119

Using frequency, as an intrinsic healing modality, is an ancient tool brought forward into the modern era through BioAcoustic Biology; a major innovation that could change the face of future medicine. Through dedication, tenacity and hard work the foundational principles of the math values of the voice, as an indicator of wellness, will soon become as common as taking your temperature or blood pressure when you visit your local health care provider.

This new technology utilizes the premise that the body can identify and prescribe for itself using the algorithms of vocalized frequencies to accurately quantify, organize, predict, and extrapolate biometric information.

“The list of how Vocal Profiling can be used seems endless and provides an avenue for the integration of energy medicine with the allopathic approach,” states Roman Chrucky, MD. Dr. Chrucky credits this new technology with predicting his heart attack last year and for helping his body reverse a diagnosis of prostate cancer.

“My experiences with this technique are very real because they have made a difference in my own life and those of my patients. I am very happy with this work and very happy that Sharry has stuck to these ideas in the face of much adversity. In my opinion she’s the doctor’s doctor. I send all my perplexing patients to her even though by definition, what she does is not medicine.”

Known as **Vocal Profiling** the idea of analyzing the frequencies and modulation of a human voice to determine emotional, biochemical, and structural status of a person is being used by medical facilities and schools; for military applications; in police work for verification purposes; in research studies for issues thought to be incurable, to determine

wellness patterns; to relieve the stress of pain; to determine exposure to toxins and pathogens. From working with the firefighter’s union and engineers at ground zero, to assisting physicians in determining the potential cause of health-related mysteries, this novel work is Star Trek medicine in the making.

Edwards has organized a network of people who are being trained in these techniques so that a groundswell of people can provide support to their own communities should a health catastrophe occur. Following in the footsteps of Buckminster Fuller, her premise is to put a new paradigm of health in the hands of The People.

*“In order to change something,  
don’t struggle to change the  
existing model. Create a new model  
and make the old one obsolete.”*

*...Buckminster Fuller*

It usually takes a well-funded scientific breakthrough or an overwhelming catastrophe to facilitate change that actually makes a difference. People are slow to embrace new scientific information because anything fundamentally different from the status quo intimidates them. Although a major disaster forces transformation, people don’t always adjust willingly. The most profound and permanent way to cause a shift in perception is through affirmative life experience.

The Institute has taken on the task of providing Tools and Solutions to the public to combat wellness concerns. A recent survey of 99 million Covid-vaccinated people published

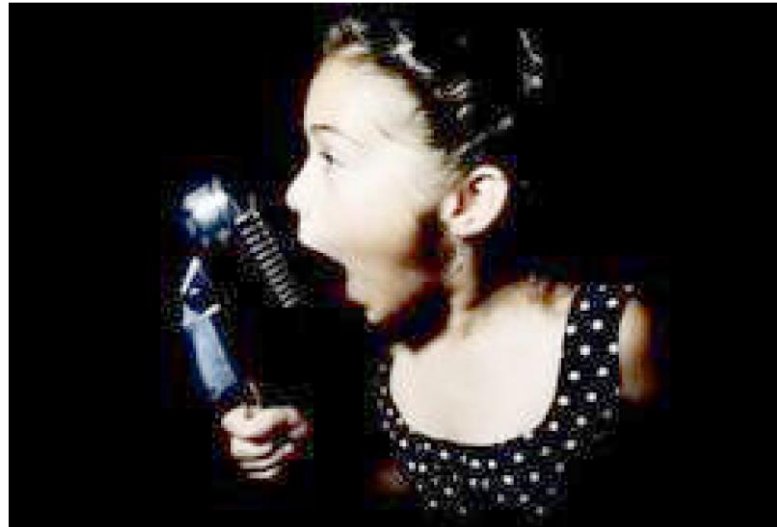
by PubMed indicated that Covid 19 vaccinated individuals presented increased health vulnerabilities in more than eight categories. The June and July 2024 issues of Masters of Health Magazine attempted to address these issues by presenting possible Self-Health solutions. As a result, the Institute is left with an overwhelming number of pleas for help. Many of these individuals report that they feel helpless with no answers to their declining health.

The Institute's SoundHealthPortal.com offers classes and software to the public so that people can access the tools and solutions being made available in support of SELF-HEALTH.

But we still find that we have a shortage of trainers and practitioners. We consider this situation a worldwide emergency. For this

reason, we are attempting to address this tragedy by offering public classes for the masses.

If you are interested in becoming part of the solution, please visit – for information and beginning downloads of class materials <https://www.bioacousticsolutions.net/portal/class-info>



**BioAcoustic Keynotes are  
brought to you  
by the  
Institute of BioAcoustic  
Biology  
& Sound Health**



Go to – [SoundHealthPortal.com](https://www.soundhealthportal.com)  
to have your vocal print analyzed.

Download the software, practice with it, and use the tutorials.

For live online class, please contact Sharry at  
[SharryOnAir@gmail.com](mailto:SharryOnAir@gmail.com)

To comment or ask a question – [SharryEdwards@gmail.com](mailto:SharryEdwards@gmail.com)

References

1. <https://pubmed.ncbi.nlm.nih.gov/38350768/>  
A Systematic REVIEW of Autopsy findings in deaths after covid-19 vaccination. Author links open overlay panel Nicolas Hulscher a, Paul E. Alexander b, Richard Amerling b, Heather Gessling b, Roger Hodgkinson b, William Makis c, Harvey A. Risch d, Mark Trozzi e, Peter A. McCullough
2. [#UNRIG Video \(25:33\) Sharry Edwards on BioAcoustics – Mind-Boggling Authentic Energy-Sound Healing](#)

<https://phibetaiota.net/2020/12/unrig-video-2533-sharry-edwards-on-bioacoustics-mindboggling-authentic-energy-sound-healing/>

In the Beginning:

- Part 1: <https://vimeo.com/267137390>  
The BioAcoustic Journey Part
- 2: <https://vimeo.com/279101543>  
Creating the Medicine of the Future Part
- 3: <https://vimeo.com/279267069>
3. <https://www.sciencedirect.com/science/article/pii/S0379073824001968>

A Systematic REVIEW of Autopsy findings Found that 73.9% of deaths were directly due to or significantly contributed to, by COVID-19 vaccinations.

Sharry Edwards M.Ed.,  
Director of Research  
SoundHealth Research –  
[a registered 501(c)(3)]  
USA: 740-698-9119  
[SharryEdwards@gmail.com](mailto:SharryEdwards@gmail.com)

**BioAcoustics is not Medical**

**BioAcoustics is not Musical**

**BioAcoustics is Mathical★**

Sharing Novel Vocal BioMarkers to  
establish Math as Medicine

## SOUND HEALTH KEYNOTES FOR AUGUST

**By Sharry Edwards**, Instructor Emeritus, Capital University of Integrative Medicine, Washington, D.C. Department of Natural Medicine.

*BioAcoustic Frequency-based Correlates for August 2024 – Many of these correlates are associated with reported Covid 19 issues.*

*Frequencies bombard the earth in a yearly cycle. Here, we attempt to report active frequency correlates for each week. Sensitive people will begin to notice the effects 8-10 days earlier than others.*

*For most of August the muscles of the **neck and upper back** will be stressed along with **B vitamins** and their co-factors. Expect fatigue unless you load up on B vitamins and B Vitamin-containing foods. The Literature suggests that NAD, a supplement, is great for those suffering from Covid fatigue.*

**JUL 28 – AUG 3** – iron comes into play this week, further stressing fatigue symptoms. Cellular inflammation initiates this week. There are lots of anti-inflammatory articles on the internet. Breathing may become strained as the diaphragm frequencies come into play. Nerve sheathing proteins and biochemicals are active; including actin and myosin associated with Tinnitus.

**AUG 4-AUG 10** - This is “be kind to your liver” week. It is working overtime to produce the enzymes and hormones that you need. Lyme’s pathogen frequencies begin to come active this week.

**AUG 11-AUG 17** - Herpes Simplex, Hepatitis Pathogens are active this week. Stress on B vitamins continues. Inflammation frequencies deepen. The Vitamin K gene, along with selenocysteine (enzymes and detox) and gout-causing biochemicals come into play at the end of the week.

**AUG 18-AUG 24** - Allergic reactions bloom all this week. Control of mast cell reactions will be tricky. Tooth plague will be more noticeable. Iron and nerve sheathing issues may be more noticeable - restless leg symptoms for example may be more bothersome.

Spine issues dealing with the neck: C-2, Thoracic – spleen, pancreas, gallbladder (T-7) and prostate, legs, (S-2) - lower spine. MSG as a toxin may cause increased brain fog this week.

**AUG 25 - AUG 31** - Some beginning throat and tongue irritation may be noticeable. More Covid symptoms may appear as hemorrhagic virus spike proteins become more active (clotting). Abdominal muscles become stressed and may cause more low back pain. Several issues that deal with male performance are beginning to climb. B1 is more stressed than other B vitamins this week. Boron, a mineral (known to support bone health and alleviate the pain arthritis), is activated this week.

It will depend on your brain dominance how you react to these frequencies. Play it safe and pay attention to your body’s responses.

# BIOACOUSTIC SOLUTIONS

Breaking the Sound Barriers of Disease!

## Can Your Voice Reveal the State of Your Health?

Evaluating your own voice takes on new meaning if you begin to consider the possibility that the sounds of your voice may be a holographic representation of all that you are. Imagine a future in which our individual vocal frequency is our identification; where the use of frequency based biomarkers contained within our voice can be used to keep us healthy and emotionally balanced.

From birth to death, we use sounds to express our needs and emotions but there are additional layers of information hidden within our words. As man evolved, language became levels of intricate harmony nestled within structures of great elegance that carried meaning and allowed understanding of ourselves and others.

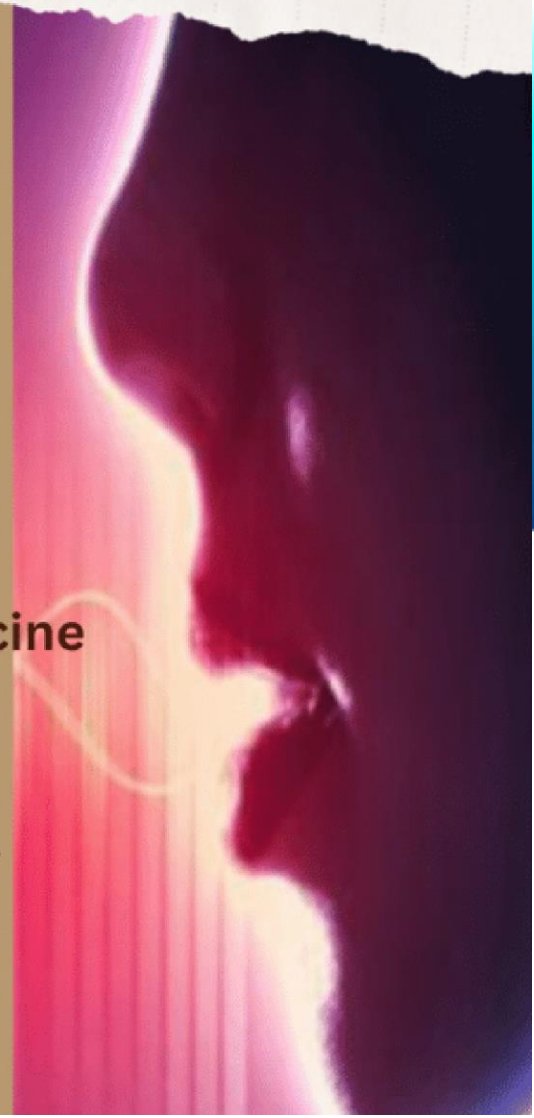
## Every Body has a Sound

BioAcoustic Biology has verified that the frequencies of your voice are a numeric holographic representation of those brain waves. Correlations of these frequencies to human health and wellness have been decoded by the Institute of BioAcoustic Biology & Sound Health since in early 80's

Create a **BIOACOUSTIC CENTER** for  
**YOUR COMMUNITY**

## Exploring the Potential of Math as Medicine

In order to provide predictability and safety, the concepts of math and medicine often act conjointly to quantify, define and model medical practice. Studies conducted by the non-profit Institute of BioAcoustic Biology & Sound Health, located in Albany, Ohio, USA, have consistently demonstrated that math can be much more than a measurement tool. The case studies they have amassed, using Math, as frequency-based BioMarkers, indicate that the solution to therapeutic predictability and resolution may be possible.



## Breaking the Sound Barriers of Disease Series

Connecting the dots for mechanical sentients

# BioAcoustic Solutions for the Professional

- ✓ Self Paced
- ✓ Software included
- ✓ Math as Medicine info
- ✓ Humans as carbon-based mechanisms
- ✓ Determines root cause BioAcoustically
- ✓ Maintains client history and comparisons
- ✓ Sound Health Portal Subscription Required
- ✓ Access to up-to-date/cross referenced BioMarkers
- ✓ Create-Client based evaluations with cross-references using a few clicks of a button

Based on work by Sharry Edwards, MEd., the recognized pioneer of BioAcoustic Vocal Profiling.

## Mechanical Sentient Connections

### BioAcoustic Solutions for the Professional-Fact Sheet

Designed for Professionals

#### Class Structure:

ONLINE

Cost: \$6400

Session 1-3; group, self-paced, 2-hour classes.

Session 4-5; private, 2 hours each

#### Course Outline:

Session 1- Preparing your computer, Portal overview

Session 2- BioMarkers, Client Reports

Session 3- Templates, Bundles

Session 4- Reports, Formulas, ToneBox

Session 5- Client Follow-up

### WHAT YOU GET:

S2S ToneBox

Microphone

ToneBox

Access to Health Portal

NanoVoice Software & Text

Access Support Group

Starter Wheel

Manuals

Video List/Access

BioAcoustic Basics Text

Wellness Provider Text

Pulling Points PP

Tone Trials PP Video

leCiel

Robot

Biggest Liar

Sample reports, Keynotes

Send us

NutrientAssm Chart

Guardian Papers

Jill's Bib

Breaking Sound

